

An abundance of textile inks to choose from. Textile pigment ink and sublimation dye ink can be loaded at the same time.

Depending on the type of application and fabric, 5 different type of inks can be choose from*1. It is now possible to choose textile pigment ink (TP400) and sublimation dye ink (Sb420) at the same time*2 (as the hybrid function), making possible to print with only one machine on cotton, hemp, polyester and similar textile.

Ink type	Product name	Color	Features	Applicable fabric
Sublimation dye ink	Sb420	Bl, M, Y, K, Lbl, Lm	Sublimation ink for direct printing. No transfer paper is required.	Polyester
Disperse dye ink	Dd400	C, M, Y, K, R, Gray, Violet, Pink	Inks are fixed by heating and have high durability.	Polyester, nylon, acetate, and other fibers
Textile pigment ink	TP400	C, M, Y, K (Bl, R, Lk)	Simple post-printing process. No steaming, washing and drying processes are required. Inks are fixed by only heating.*3	Cotton, hemp, and other fibers
Reactive dye ink	Rc400/Rc500	C, M, Y, K, Bl, R, Or, Lk	Inks produce vibrant colors, reproduce a wide gamut of colors, and have water resistance, light-fastness, and rub-fastness because of dyestuff molecule bonding with the fibers.	Cotton, hemp, silk, rayon, and other fibers
Acid dye ink	Ac400	C, M, Y, K, Bl, R, Or, Lk	Inks produce vivid and brilliant colors on animal fibers and synthetic protein fibers such as nylon.	Wool, leather, silk, nylon, and other fabrics

*1 Please select an ink type depending on your intended use. The ink type cannot be changed after installation. With the hybrid function two types of inks (textile pigment and sublimation dye ink) can be loaded.

*2 Each textile pigment ink (TP400) and sublimation dye ink (Sb420) has 4 colors (C,M,Y,K)

*3 Depending on the type of printing, steaming and washing may be needed.

Software

Either TxLink4 Lite or RasterLink6Plus is bundled under the selection at the time of your purchasing.

Professional RIP software with new features and more advanced for textile printing

TxLink4™

- Color replacement function for Raster / vector data and CMYK / RGB images
- The "16 bit rendering" for super fine color gradation
- The "Parallel RIP" for high work efficiency

TxLink4™ Entry model with selected practical functions

Newly upgraded RIP software with higher functionality and more user-friendliness

RASTER LINK 6 PLUS

Simple icon display - Intuitive and easy-to-understand operability
Save operation time by registering settings as favorites

Specifications

Item	Tx300P-1800B
Printhead	On-demand piezo inkjet technology (4 line printhead)
Print resolution	360 dpi, 540 dpi, 720 dpi, 1080 dpi, 1440 dpi
Maximum print width	1,880 mm (74 in)
Maximum media width	1,900 mm (74.8 in)
Ink	Type / Color
	Sublimation dye ink: Sb420 (Bl, M, Y, K, Lbl, Lm)
	Disperse dye ink: Dd400 (C, M, Y, K, R, Gray, Violet, Pink)
	Textile pigment ink: TP400 (C, M, Y, K, Bl, R, Lk)*
	Reactive dye ink: Rc400/Rc500 (C, M, Y, K, Bl, R, Or, Lk)
Acid dye ink: Ac400 (C, M, Y, K, Bl, R, Or, Lk)*	
Package size	2L ink pack
Media thickness	1.0 mm or less
Roll media weight	40 kg (88 lb) or less Please note that the above maximum weight applies on a printed roll including ink weight.
Roll media diameter	φ250 mm or less
Certifications	VCCI class A, FCC class A, ETL UL 60950-1 CE Marking (EMC, Low voltage, Machinery directive, and RoHS), CB, REACH, Energy Star, and RoHS*
Interface	Data output: USB 2.0 Hi-speed / Ethernet 1000BASE-T E-mail output: Ethernet 100BASE-T / 100BASE-TX / 1000BASE-T
Power supply	Single-phase AC100~120 V / AC200~240 V±10% 50 / 60 Hz±1Hz
Power consumption	AC100 V: 1.44 kW / AC200 V: 1.92 kW
Operational environment	Temperature: 20-30 °C (68-86 °F) Humidity: 35-65% Rh (Non condensing)
Dimensions (W × D × H)	3,185 mm × 1,912 mm × 1,844 mm (125.3 × 75.2 × 72.5 in)
Weight	627 kg (1382.2 lb)

Options

Item	Product number	Note
Small relay box	OPT-J0370	Interlock controller between a main unit and an external heater
Relay Box2	OPT-J0407	
Slip sheet holder unit	OPT-J0405	Holder unit using for prevention of ink set-off

●Some of sample images in this catalog are simulated. ●Specifications, designs and dimensions stated in this catalog may be subject to change without notice (for technical improvements, etc). ●All product and company names in this catalog are trademarks or registered of the respective companies. ●The printhead ejects extremely fine dots for printing, and therefore printed colors may vary after replacing the printheads. ●When using multiple printer units, printed colors would be different slightly because there is a slight difference among those units. ●Depending on image files used for printing, the print quality would be affected when printing in a low-resolution mode with the lowest number of passes. ●The specifications described in this catalog are as of August 2022.

Mimaki™ MIMAKI ENGINEERING CO., LTD.
2182-3 Shigeno-Otsu, Tomi-city, Nagano 389-0512, Japan
TEL: +81-268-64-2281

Mimaki Global Network

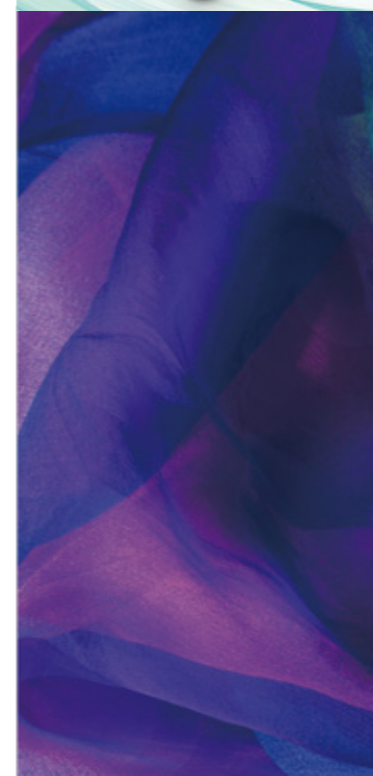
USA	MIMAKI USA, INC.	Europe	MIMAKI EUROPE B.V.
Brazil	MIMAKI BRASIL COMERCIO E IMPORTACAO LTDA	Indonesia	PT. MIMAKI INDONESIA
India	MIMAKI INDIA PRIVATE LIMITED	Australia	MIMAKI AUSTRALIA PTY. LTD.
Taiwan	MIMAKI ENGINEERING (TAIWAN) CO.,LTD.	China	SHANGHAI MIMAKI TRADING CO.,LTD.
Singapore	MIMAKI SINGAPORE PTE. LTD.	Thailand	MIMAKI (THAILAND) CO.,LTD.

For
**TEXTILES &
APPAREL**

Entry-Model, Belt-Type Direct-to-Textile Inkjet Printer **Mimaki™**
Tx300P-1800B



Next is
To THE Ultimate ON-Demand production



Direct-to-Textile Inkjet Printer makes possible printing on *sheer fabric* and *stretchy materials*



Tx300P-1800B

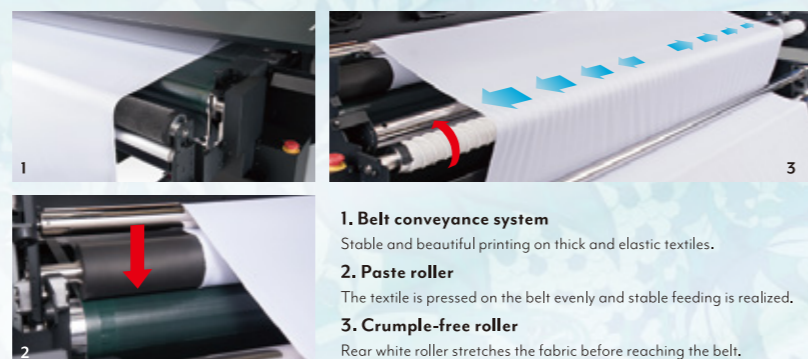
This 1.8-meter-wide printer is specifically designed to address the need in textile and apparel industries for printing on sheer fabric and stretchy materials such as knits. The entry model, which does not require a screen print, is a powerful product for small-scale and various on-demand customer's needs.



Belt convey mechanism ensures stable textile transportation

As the textile is fixed on the belt and transported without pulling, stable and high-quality printing is now possible on sheer and thin textile. Its unique design makes it suitable for printing on a wide variety of textile, including raised fibers and stretchy materials such as knits.

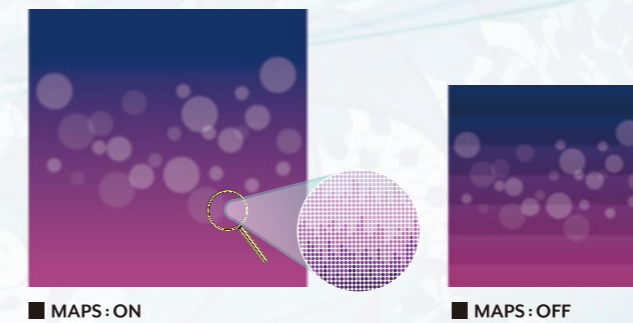
Crumpled and bending of textile is reduced as the printer is equipped with a "crumple-free roller" and a "paste roller" on the belt conveyance system, resulting in beautiful and stable results.



Mimaki's print technologies

Mimaki Advanced Pass System 4 (MAPS4) reduces banding

Banding and uneven color printing are reduced by scattering swath boundaries.



Superior inkjet technology

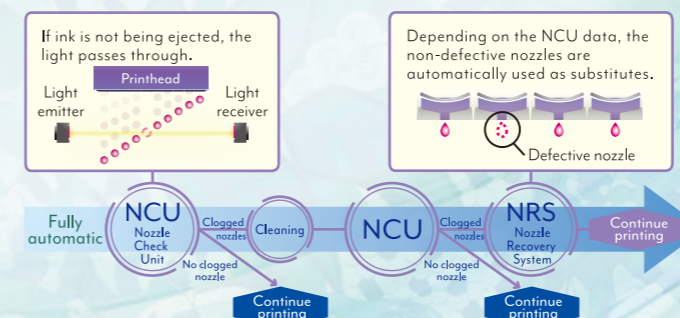
Mimaki's superior inkjet technology accurately places the ink droplets without losing their perfect circularity. This ensures that texts, lines, and edges are clearly and sharply printed.



Uninterrupted printing solution

Continuous operation support pack minimizes the downtime

The Nozzle Check Unit (NCU) detects nonfunctioning nozzles and automatically cleans them. If the nozzles fail to operate after cleaning, defective nozzles are replaced by non-defective ones until a technician arrives, and printing is continued. This feature enables uninterrupted print operations and continuous productivity.



Standard features of MBIS3 and UISS deliver continuous printing for a long time.

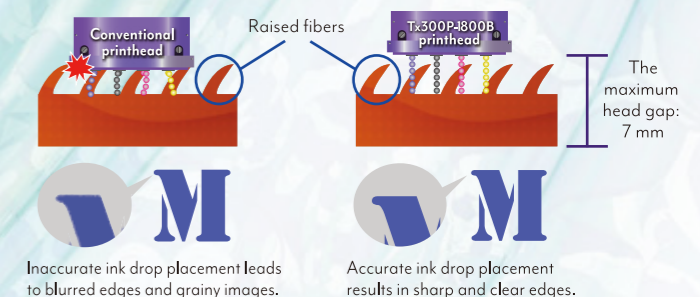
Large two liter ink packs are installed in MBIS3¹ for long-time continuous printing to reduce operating cost. As soon as one ink container is empty, UISS² automatically provides ink from another container without any interruption to printing. Continuously supply ink system ensures unattended continuous printing.

*1 MBIS3: Mimaki Bulk Ink System3
*2 UISS: Uninterrupted Ink Supply System



Printhead allows printing on various types of textile

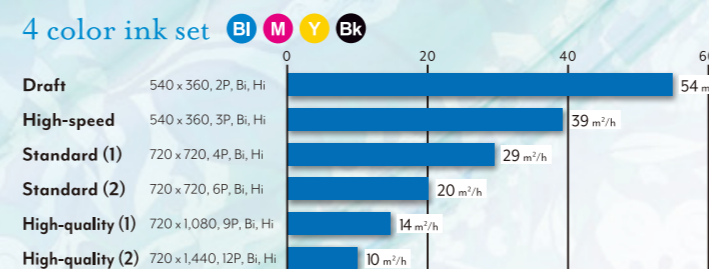
While printing on raised fiber surface textiles, a high head gap setting is required to prevent contact between the printhead and the nap. In conventional models, such gap conditions reduce the accuracy of ink droplet placement. However, the printhead ejects ink droplets at a high speed to maintain the straightness of the droplet direction, and accordingly accurate ink droplet placement is achieved. This enables high-quality printing on napped textiles.



Printing at speed of up to 50 square meters per hour

Adjustable speed from draft mode to high-quality, depending on customer's needs

4 color ink set



6 color ink set

