

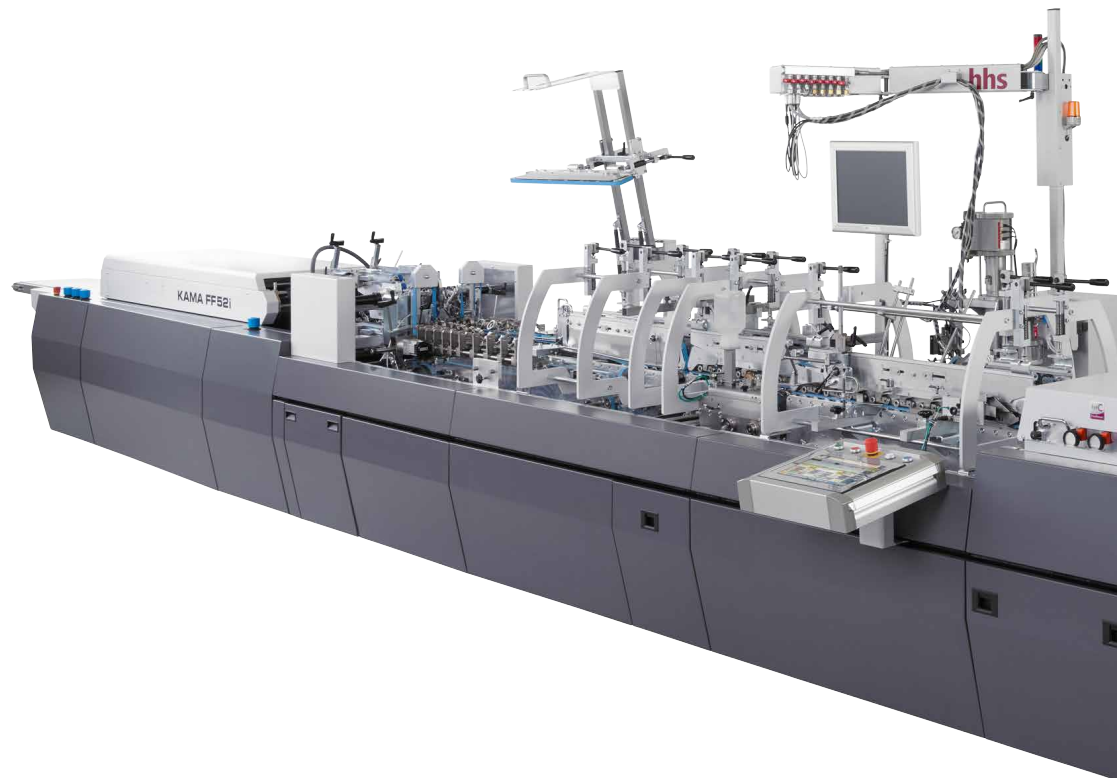
Folding, gluing, inspection.

KAMA FF 52i

The first folder-gluer for short-run folding cartons.

NEW

Need to set up a folder-gluer for the next job order in just 5 minutes? No problem – this is what we developed the FlexFold 52 for, which was launched on the market at drupa 2016 as the series production model KAMA FF 52i. The world's first folder-gluer for short-run folding cartons with virtually fully-automated set-up and 100 % inspection is tailor-made for digital packaging printing.

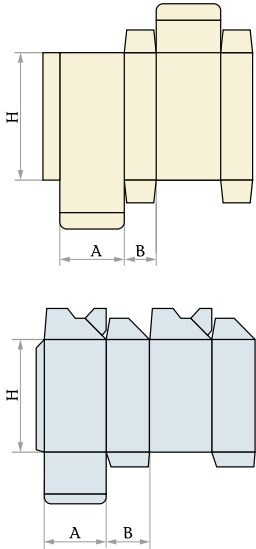


Standard equipment

- › Sheet feeder; prefolder; folding station, ejector for bad parts, kicker; pressing belt and delivery belt
- › Automated size adjustment in both transverse and longitudinal direction
- › Sliding control panel
- › Automatically adjustable bottom-up gluing unit
- › Software-supported machine set-up with job archive
- › Remote service port
- › Network integration (JDF Job Ticket, Track & Trace, connection to the MIS)

KAMA FF 52i for job set-up
at record speeds





Straight-line boxes

B	min. 10 mm ($\frac{3}{8}$ in)
A + B	min. 40 mm ($1\frac{9}{16}$ in)
A + B	max. 250 mm (10 in)
H	min. 50 mm (2 in)
H	max. 230 mm (9 in)

Lock bottom boxes

B	min. 35 mm ($1\frac{3}{8}$ in)
A + B	min. 70 mm ($2\frac{3}{4}$ in)
A + B	max. 250 mm (10 in)
H	min. 50 mm (2 in)
H	max. 230 mm (9 in)



Applications

- › Gluing and folding of
 - › Straight-line boxes
 - › Automatic boxes (crash-lock-bottom)
 - › Boxes with slip lids
- › Inspection with ejector for bad parts (options)
- › Inline Braille (option)

Highlights

- › Virtually fully automated job set-up with the KAMA APA system (patent pending)
- › Changeover from one straight-line box to another straight-line box takes just 5 minutes
- › Fast changeover from automatic boxes to straight-line boxes and vice versa
- › Inspection systems with ejector for bad parts for:
 - i1 – Glued seam
 - i2 – Barcode on the glue flap
 - i3 – 100 % inspection of print image, colour, text, Braille, scratches, smudges

Accessories and auxiliary equipment

- › Inline Braille system
- › Inspection systems i1, i2, i3
- › Plasma treatment for UV lacquers
- › Upper gluing system with nozzles
- › Packaging system for folded cartons



Video

Job change



Video

Inspection

