

With the Omega SRI you start the next generation of slitting, inspecting and rewinding



Grafix Industrial Expertos en impresión digital
Imprenta y Empaque
 industrial@grafix.com.co
 Tel: (571) 432 69 99, Calle 938 No. 13-30 Of. 301.
 www.grafix.com.co, Bogotá, Colombia.



Technical features of the Omega SRI

- Available web width 330 mm, 430 mm, 530 mm
- Completely servo drive
- Converting speed up to 350 m / min.
- Latest SPS / PC based operating system
- Pneumatic expandable mandrels, for unwinder and rewriter
- Roll diameter at the unwinder up to 800 mm
- Roll diameter at the rewriter up to 500 mm (600 mm as an option)
- Easy removable nip roller with adjustable contact pressure
- Rotary knives «easy adjust» including fully extensible bottom and top shaft: easy positioning of the knives without breaking the web
- Including three bottom and top knives
- Efficient web tension control during highest acceleration at unwinder and rewriter site
- Electronic web guide including an ultra sonic sensor for paper and clear on clear material
- Programmable diameter stop on the unwind
- Inside and outside winding
- Sliding splice table and a movable web clamp for long labels
- Latest touch screen generation, easy handling
- Automatic stop of the complete roll at a diameter, a label count or a meter count
- Efficient message management
- Integrated, all automatic procedures for converting selectable
- Easy job file save and load
- Integrated remote support via Internet - Support at the highest level

AB Graphic International GmbH
 Thomas-Edison-Straße 10
 D - 52499 Baesweiler · Germany
 t: +49 2401 60 20 0
 f: +49 2401 60 20 79
 e: info@abgint.de
 www.abgint.de

AB Graphic International b.v.
 Argonweg 49
 NL-1362 AB Almere · Niederlande
 t: +31 (0) 36 / 53 66 244
 f: +31 (0) 36 / 53 63 195
 e: info@abgint.nl
 www.abgint.nl

AB Graphic International Ltd
 Lancaster Road
 Carnaby Industrial Estate
 Bridlington, East Yorkshire
 YO15 3QY, England
 t: +44 (0) 1262 67 11 38
 f: +44 (0) 1262 67 70 09
 e: info@abgint.com
 www.abgint.com

AB Graphic International Sarl
 6-8 Avenue de Creil
 60300 Senlis, France
 t: + 33 (0)3 44 53 99 81
 f: + 33 (0)1 48 25 65 29
 e: info@abgint.fr
 www.abgint.fr

AB Graphic España
 Joaquim Castells, 1
 08980 Sant Feliu De Llobregat
 Barcelona, Spain
 t: + 34 936 854 435
 e: ab-graphic@ab-graphic.es
 www.abgint.com

AB Graphic International Inc
 1760 Britannia Drive
 Unit 7, Elgin
 IL 60124, USA
 t: + (1) 909 230 6640
 f: + (1) 909 230 6650
 e: info@abgintusa.com
 www.abgint.com

Omega SRI SERIES 

Slitting, inspection, rewinding equipment to suit all your finishing requirements



Omega SRI

The new generation of label converting and finishing



Perfected handling, highest productivity and an innovative operating concept. The Omega SRI fulfils all your web finishing requirements.

The SRI range uses the latest servo drive technology combined with PC/SPS based control resulting in a new level of sophistication to meet today's ever increasing demands and keep you ahead of the competition.

We guarantee highest productivity with rewinding speed up to 350 m / min.

The ergonomic design of the SRI allows you to select your choice of operating position standing or sitting.

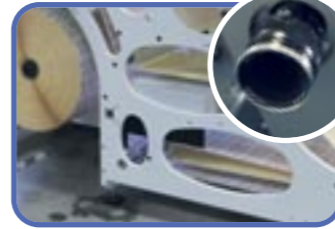
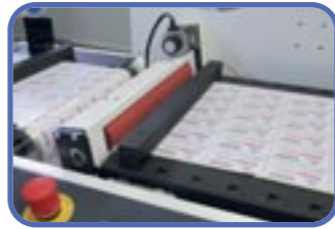
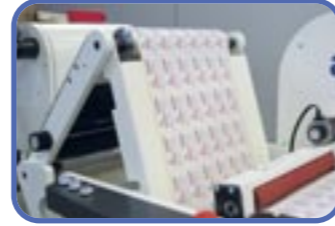
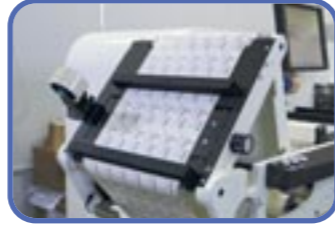
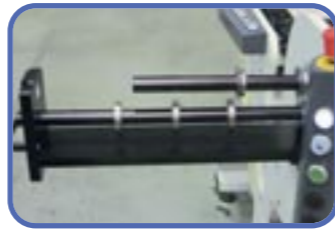
The operator can choose if he wants finishing as a horizontal or vertical production solution - all in one - his choice!

The fully integrated fleyeVision inspection control with screen operation connected with an integrated workflow for waste processing complete the picture.

Adjustable web clamps allow a variable splicing area to glue in even large labels without a problem.

An arrangeable splicing table after the rewind with an operating stroboscope simplifies the visual control.

Highlights



»easy adjust«

Easy adjust slitting system- Top and bottom knife shafts pull out independently to allow easy and quick setting. A sample of the web is clamped to a reference point for accurate setting whilst the knife shafts are in the out position. A digital vernier setting device is available as an option.

Adjustable splice table

The splice table can be raised to a vertical position to give a perfect inspection area when using a strobe.

Integrated camera inspection

The fully integrated camera system is combined with an additional nip roller to be able to efficiently remove waste material.

Latest technology

Latest control and servo systems ensure perfect web handling.

Ergonomic design

The ergonomic design of the SRI means that all operating controls are comfortably positioned for the operator.

User-friendly

Choice of operator position. The SRI can be supplied for operation either standing or sitting. (Vertical or horizontal web direction)

Touchscreen

An intuitive touchscreen controls both the machine and vision system (when fitted)

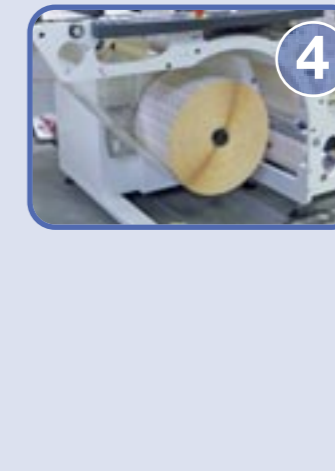
Adjustable web clamp

Variable position web clamp enables the clamps to be in the perfect position for long or short labels.

Options

- Web advance for accurate placement of the slit lanes onto the cores.
- Missing label detection
- Flag and splice detection
- FleyeVision camera inspection, full integrated 100% inspection
- FleyeVision entry level, flag, splice, missing label-inspection and strobe, all in one
- Waste web removal by nip roller.
- Waste rewinder, working in conjunction with waste nip roller
- Crush knife slitting
- Razor blade slitting
- Vernier knife setting device
- Motorised roll lift
- Second web guide (positioning of the unwinding roll)
- Second web guide (prior to camera inspection)
- Count sensor for clear on clear labels
- Strobe
- Rotary die with servo drives including waste matrix rewinder
- Reregister option for rotary die

Advantage through innovation



1 »Web Advance«

2 Dual rewind

Rewinding onto two mandrels with separate servo drives

3 Rotary die with waste rewinder

Intuitive operating per touchscreen for machine and vision system with only one single monitor.

4 Web guide

Web guide and unwind (positioning of the unwinding roll)